

GeoSpec™ CoreTest

NMR Rock Core Analyser

The perfect, packaged GeoSpec solution for routine NMR core analysis

The Oxford Instruments GeoSpec range is the industry standard NMR rock core analysis system with installations in most major oil producers and core analysis laboratories worldwide.

The latest addition to the GeoSpec range is the GeoSpec CoreTest, designed to include all the features necessary for routine core testing in a compact package, without the complexities required for research work.

The GeoSpec CoreTest operates at the standard 2MHz operating frequency, and has a probe for samples of maximum 50mm diameter.

To improve the signal to noise ratio for low porosity cores, and to reduce echo times when measuring "tight" rocks,

the GeoSpec CoreTest includes Oxford Instruments' recently developed passive Q-switched probe and reactive feedback preamplifier.

To simplify operation of the GeoSpec CoreTest, the LithoMetrix application software package developed exclusively for Oxford Instruments by Green Imaging Technologies is also included. LithoMetrix takes full control of the GeoSpec CoreTest and automatically generates BVI, FFI, CBW, porosity and T_2 cutoff values.

Features of the GeoSpec CoreTest

- Advanced, digital, PC based NMR spectrometer
- Sample sizes up to 50mm diameter
- Built in porosity calibration
- LithoMetrix application package

Research applications

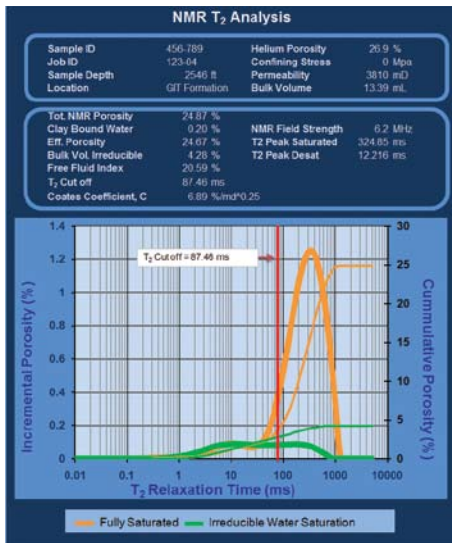
For users wanting to carry out more advanced NMR measurements, perhaps involving pulsed field gradients or custom pulse sequence programming, the full GeoSpec range is available. This includes magnets of 2MHz or 7MHz operating frequency, probes for sample sizes up to 150mm diameter and pulsed field gradients in 1, 2 or 3 dimensions. Please see the separate GeoSpec data sheet for further details.



Contact us
to discuss your
applications

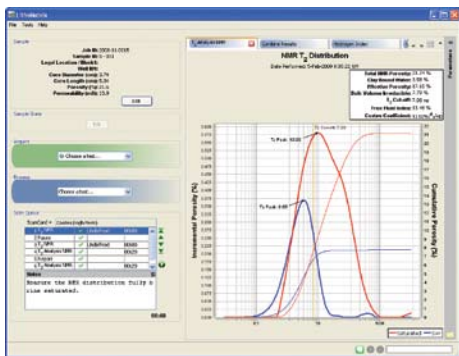
OXFORD
INSTRUMENTS

The Business of Science®

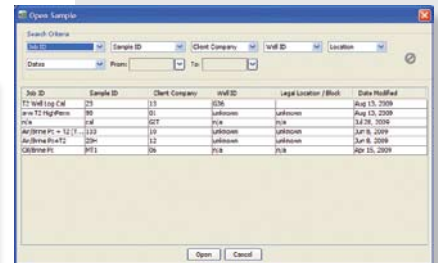
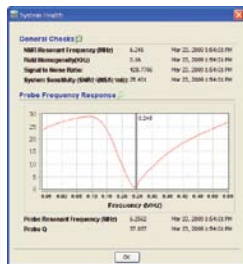


LithoMetrix software:

- T₁ & T₂ pore size distributions with automatic FFI, BVI, CBW, effective porosity, T₁ and T₂ cut-off computations (either hard cut-off or spectral)
- Standard permeability models supported (Coates and T₂ log mean). Can compute coefficient or use to estimate permeability
- Robust database storage with backup and restore capabilities
- Protects hardware and maintains calibrations
- Customisable reporting
- Processing only version available to process lab data at your desk



Acquire, view and process NMR data through the intuitive tab-based display. Real-time system feedback allows operators to monitor scan progress and display data as it is acquired. Scans can easily be stopped and restarted, while the built-in timer counts down remaining scan time.



Monitor system health and calibrations and track changes over time with built-in instrument calibration and controls. Hardware protection within the software also prevents the user from exceeding the hardware capabilities increasing up-time for the system.

Manage and store test results in the robust, comprehensive SQL database. Data are searchable by multiple criteria, including job number, date, sample identifier or location.

visit www.oxford-instruments.com for more information

www.oxford-instruments.com

This publication is the copyright of Oxford Instruments Molecular Biotools Limited and provides outline information only which (unless agreed by the company in writing) may not be used, applied or reproduced for any purpose or form part of any order or contract or be regarded as a representation relating to the products or services concerned. Oxford Instruments' policy is one of continued improvement. The company reserves the right to alter, without notice, the specification, design or conditions of supply of any product or service. **GeoSpec** is a trademark of Oxford Instruments Molecular Biotools Ltd. Oxford Instruments acknowledges all trade marks and registrations. GSCT/05/10



The Business of Science®